



Career Focused Industry Ready

www.bca.ac.uk



Course
Guide
25/26

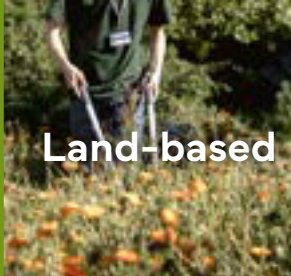


Your College

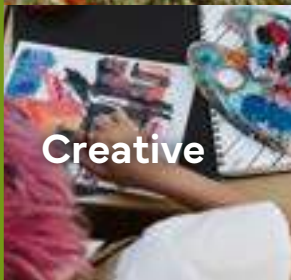
- 05 How to Apply
- 06 Study Programme
- 08 Entry Requirements
- 10 Progression Routes
- 12 T Levels
- 14 Beyond the Classroom
- 16 Student Services
- 18 Courses
- 55 Sports Academies
- 56 Apprenticeships

Information within this guide is correct at the time of going to print.

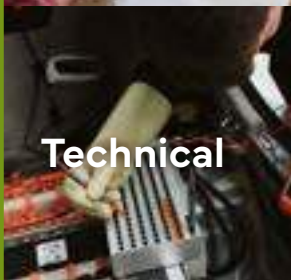
Please be aware that some course delivery may take place off campus and between The Windsor Forest Colleges Group sites.



Land-based



Creative



Technical



Active

- 18 Agriculture
- 20 Animal Management

- 30 Equine Studies
- 38 Horticulture

- 24 Art & Design
- 40 Media Production

- 46 Performing Arts
- 48 Production Arts

- 22 Applied Science
- 26 Business Studies
- 28 Early Years
- 32 Foundation Studies

- 36 Health & Social Care
- 42 Motor Vehicle

- 44 Outdoor Education
- 50 Protective Services

- 52 Sports Studies



Use the QR codes on the subject pages to visit our website and find out about the skills you will gain on each course as well as the employers we work with.

Welcome

Welcome to BCA. We are dedicated to creating high aspirations for our students and encouraging you to pursue career excellence as you work toward your goals.

Our college is committed to providing a career-focused, industry-ready education. With highly skilled staff, industry-standard facilities, and strong partnerships with employers, we ensure that you are prepared to meet the demands of the modern workplace. Our inclusive culture and focus on practical, hands-on learning equip you with the skills and confidence necessary for immediate employment and future academic pursuits. You can apply online or attend our next Open Event to explore all that BCA has to offer. We look forward to welcoming you to our college and helping you create and advance your future.



Gillian May
Group Principal and CEO

BCA is a dynamic learning environment offering a diverse array of subjects and apprenticeship opportunities.

Our staff, with extensive industry experience, provide education that prepares you for further study or entry into the workforce. Our modern campus features state-of-the-art facilities and resources to equip you for your next career step. We pride ourselves on being an inclusive and vibrant institution, committed to creating a safe and supportive environment. Our comprehensive student support includes pastoral care, counselling, and enrichment activities. Attend one of our Open Events or meet our School Liaison team during their school visits to learn more about BCA. We look forward to welcoming you!



Anne Entwistle
Principal

How to Apply

Your Step-by-step Guide to Studying at BCA

Step 1: Choose Your Course

We offer a wide range of courses at all levels – if you're still not sure, give us a call on **01753 793288** or email **admissions@windsor-forest.ac.uk** for independent advice.

Step 2: Apply

Apply online at **www.bca.ac.uk/subjects/**. You shall receive an email to confirm we have received your application.

Step 3: Attend Your Interview

You will be invited to book an interview, where you will discuss your course choice and plans for the future. This will also give you the opportunity to ask any questions you may have too.

Step 4: Offer

Following a successful interview, you shall be made a conditional offer via email.

Please note: This can take up to 14 days. To accept your conditional offer, please log back into your Student Portal. You need to accept your offer to receive your invitation to enrolment.

Step 5: Enrol

You shall be sent steps on how to enrol onto your chosen course the Summer before you start with us and you will need your exam results to be able to enrol in August. If your results are better than expected or you didn't do as well as you hoped, please do not worry, we can find a suitable alternative for you.

Step 6: Start College

We look forward to welcoming you in September!

Study Programme

Our study programmes combine your chosen subject with a range of transferable skills to enhance your learning and help you develop. We will equip you with the skills and knowledge required for progression on to university, apprenticeships or employment.

English & Maths

Development of English and maths skills is essential for successful progression. We will support you to ensure you leave us having achieved the best grades you possibly can. You will be timetabled into a class that is the right level for you based on your grades and prior experience. All students will be working towards attaining a grade 4 or above at GCSE.

Already Achieved a Grade 4 or Above at GCSE?

You will not be required to study additional English and/or maths.

Achieved a Grade 3 at GCSE?

You will be enrolled onto a GCSE course and will work towards gaining a grade 4 or above as part of your study programme.

Achieved Lower Than a Grade 3 at GCSE?

You will be enrolled onto a GCSE course or another appropriate English and/or maths qualification at an appropriate level.

Practical Lessons, Lectures & Tutorials

These planned activities take place on our extensive campus and will help you develop your independent study skills. You will focus on extending your practical skills and knowledge to gain a strong understanding of your chosen subject area.

Personal & Professional Development

Employer links are important and help you focus on gaining skills you need for your future career. Your study programme may include visits from industry professionals or trips to business venues and workplaces. College life will also help you develop the skills required to be successful in your chosen career. Good punctuality, attendance and commitment to your study programme is an expectation.

Volunteering

Involve yourself in additional activities that will enrich your development and boost your CV. Our Student Support team can help you find a volunteering opportunity that suits you.

Industry Placement & Work Based Skills Week

Most students will undertake an Industry Placement as part of their course. All students will participate in a Work Based Skills Week in partnership with industry.

Scan the QR code or visit



[www.bca.ac.uk/
student-information/
industry-placement](http://www.bca.ac.uk/student-information/industry-placement)
to find out more.



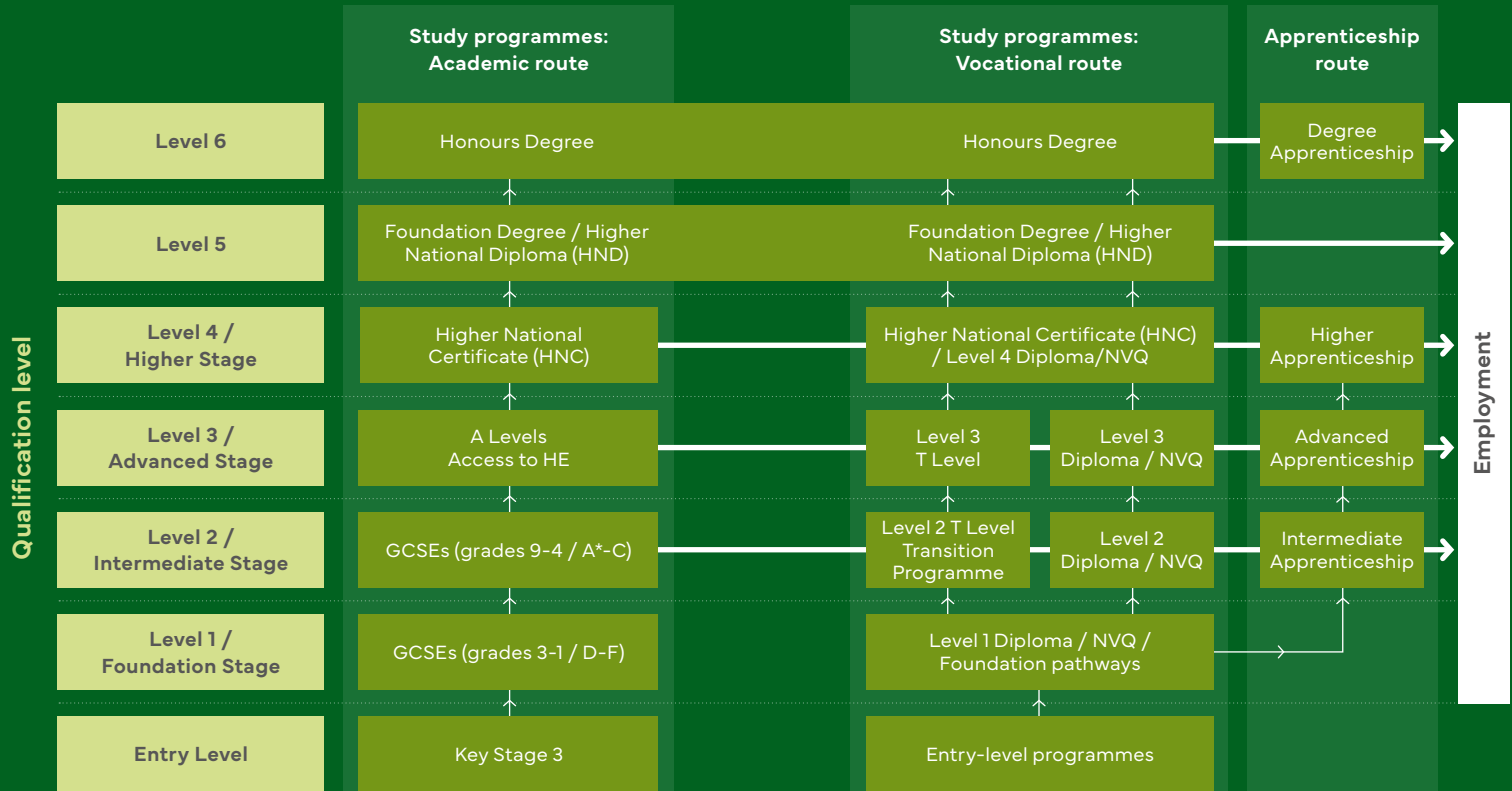
Entry Requirements

Existing qualification / grades (predicted or achieved)	Level
No formal qualifications	Entry Level 3
4 GCSEs grade 2+	Level 1 Level 2 – 2 year
4 GCSEs grade 3+ including one of English or Maths at grade 4+	Level 2 – 1 Year
4 GCSEs grade 4+ including English and maths. Plus any other additional entry requirements, which can be found on the website.	Level 3 / T Level – 2 year

Please note: Some subjects have specific additional entry requirements. Please visit these subject courses on our website to find out more.



Progression Routes



T-LEVELS

THE NEXT LEVEL QUALIFICATION

T Levels are qualifications for students aged 16 to 19 living in England who have finished their GCSEs.

Each T Level is equivalent to 3 A Levels and helps you to develop the knowledge and practical skills to enter the workplace or progress onto further study.

T Levels offer you more practical work experience and industry placement hours as part of your education than any other qualification currently available, except for apprenticeships.

T Levels, A Levels, and Apprenticeships have key differences in terms of their focus and structure.

- **T Levels** are designed to prepare learners for skilled professions or further study. They consist of 80% classroom-based learning and 20% industry placement, providing practical work experience. T Levels are equivalent to 3 A Levels and offer a broad understanding of sector-specific issues and occupational specialisms.
- **Apprenticeships** are for individuals who want to learn a specific occupation. They involve 80% on-the-job training and 20% classroom-based learning. Apprenticeships are suitable for those who have a clear career path, are at least 16 years old, and want to earn a wage while learning.
- **A Levels** are focused on academic education and are typically chosen by learners who want to continue their academic studies.

These distinctions highlight the varying emphasis on practical skills, industry experience, and academic education in each pathway.

Are T Levels included in the UCAS tariff?

UCAS tariff points are allocated to T Levels in the same way they are with A Levels.

UCAS points are only allocated to the **overall T Level grade**. Students must achieve at least an overall pass grade to receive UCAS points.

UCAS tariff points	T Level overall grade	A Level equivalent
168	Distinction*	A* A* A*
144	Distinction	AAA
120	Merit	BBB
96	Pass (C or above on core component)	CCC
72	Pass (D or E on core component)	DDD



Find out more

**CAREER
FOCUSED
INDUSTRY
READY**



Beyond the Classroom

At BCA you will find a vibrant, friendly, welcoming College with excellent resources, facilities and opportunities for students.

It is a place where you can enjoy learning, build your confidence, make new friends and prepare for your future career. From Sports Academies and field trips to work experience and guest speakers, you'll have plenty of opportunities to develop the skills you need for life after work or further study.

Vibrant Student Union

Our Student Union offers many opportunities to get involved. You could become a student rep or simply enjoy the many activities on offer. Show up, speak up and tell us what you think! Play your part and make a difference to College life.

Getting to College

We run a subsidised transport service covering a wide area. We operate 20 routes in total and over 800 of our students use the service every day. We pick up from 10 mainline railway stations – Camberley, Reading, Slough, Maidenhead, Uxbridge, Amersham, Aylesbury, Bracknell, High Wycombe and Hounslow – with a total of 110 stops across all routes.



Check out all
our transport
routes



Student Services

Students at BCA often comment on how supported they feel during their time with us, both with their College work and personal life.

As a BCA student you will have access to a wide network of support services to help you make the most of your time here.

These include:

Student Welfare

Counselling

Industry Placement & Careers Advice & Guidance

Tutor Support

Financial Assistance (Discretionary Learner Support Fund & 19+ Learning Loans)

Additional Learning Support (ALS)



Find out how we can support your individual learning needs

We recognise that our students come to us with a range of different skills, abilities and experiences. Additional Learning Support is available across the College to help students with evidence of declared learning needs.

If you would like to speak to a member of our ALS team, please call us on **01628 827549** or email learning.support@windsor-forest.ac.uk



Agriculture



We also offer
Agriculture
Apprenticeships

Please see page 52

www.bca.ac.uk/subjects/agriculture

Level 2 Programme in Agriculture

(1 year or 2 year
study options available)

Level 3 Programme/ T Level in Agriculture

Please note: At the interview, we will require evidence of your interest and passion for agriculture and in developing a career working with livestock, crops or machinery.



Start Your Career

Agricultural Journalist

Reporting on topics related to agriculture, farming and the broader food industry.

Food Processing

Transforming agricultural products into food.

Agronomist

Specialising in the science of soil management and crop production.

Stockperson

Involves the care and management of farm animals.

Contractor Farm Manager

Managing farming operations on behalf of farm owners.



Visit our website to find out more about the courses on offer, the skills you will gain on our courses and the employers we work with.

Animal Management

Level 2 Programme in Animal Care

(1 year or 2 year study options available)

Level 2 Programme in Work-based Animal Care

(2 year programme)

Level 3 Programme/ T Level in Animal Management and Behaviour

Level 3 Programme/ T Level in Animal Management and Science

Start Your Career

Animal Education Officer

Creating and delivering educational programs about animals and wildlife conservation to a variety of audiences.

Conservationist

Working to protect, manage and restore natural environments and the wildlife within them.

Veterinary Nursing

Providing medical care and support to animals under the supervision of veterinarians.

Zoo Keeper

Involves the daily care of animals housed in zoos, aquariums, or wildlife parks.

Animal Trainer

Involves teaching animals specific behaviours and skills.



Applied Science



www.bca.ac.uk/subjects/applied-science

Level 3 Programme in Applied Science

Please note: At the interview, we will require evidence of your interest in the sciences and in developing a career working in this field.

We recommend students to be working at grade 5 in their GCSEs if they are interested in progressing to university.

We also recommend that you attend an Applied Science taster session to gain an insight into what the course will involve.

Start Your Career

Biomedical Science

The study of the human body, medical treatments at a molecular and cellular level.

Forensic Science

Applying scientific principles and techniques to investigate crimes and assist in the administration of justice.

Medicine

The diagnosis, treatment and prevention of diseases to promote the health and well-being of individuals.

Medical Laboratory Analyst

Performing laboratory tests to assist physicians in the diagnosis and monitoring of medical conditions.

Nursing

Providing comprehensive healthcare services to individuals.

Teaching

Educating students of various ages and backgrounds in academic subjects.



Visit our website to find out more about the courses on offer, the skills you will gain on our courses and the employers we work with.

Art & Design



Level 2 Programme in Art & Design

(1 year or 2 year study options available)

Level 3 Programme in Creative Practice, Art, Design & Communication



Start Your Career

Graphic Design

Creating visual concepts and designs to communicate messages and information effectively through various mediums.

Sculpture

Involves creating three-dimensional artworks through the manipulation of materials.

TV Production Runner

The person that acts on the behalf of the production team to deliver daily tasks on set.

Animation

Creating moving images and visual effects using a variety of techniques and technologies.

Advertising & Marketing

Creating and promoting products or services through strategic communication and promotional activities.

Photography

Capturing subjects in a commercial environment, usually working on a freelance basis.



Business Studies



www.bca.ac.uk/subjects/business-studies

**Level 2 Programme/
T Level Foundation
in Business**

**Level 3 Programme/
T Level in Business Studies**

Start Your Career

Accounting

Includes responsibilities such as financial reporting, budgeting and forecasting.

Account Manager

Serve as the liaison between companies and their customers.

Business Analyst

Plays a critical role in organisations by helping to bridge the gap between IT and the business, to improve processes and software.

Marketing

Can be highly rewarding for those with creativity, strategic thinking and strong communication skills.

Customer Services

Involves interacting with customers to provide support and solutions to their inquiries.

Teaching

Educating and inspiring students, preparing them for future academic and professional endeavors.



Visit our website to find out more about the courses on offer, the skills you will gain on our courses and the employers we work with.

Early Years

Level 2 Programme Early Years Practitioner

(1 year or 2 year study
options available)

Level 3 Programme/ T Level in Early Years

Please note: A Disclosure Barring Service check is also required.



Start Your Career

Early Years Practitioner

Involves monitoring the wellbeing of a child while observing their progress and development.

Primary School Teacher

Involves a diverse range of responsibilities centred around educating young children.

Social Worker

Working with individuals, families and communities to address various social and emotional challenges.

Educational Therapist

Works with students to address learning challenges and support academic success.

Play Therapist

Mental health professional who uses play-based interventions to help children express themselves and resolve emotional or behavioural difficulties.



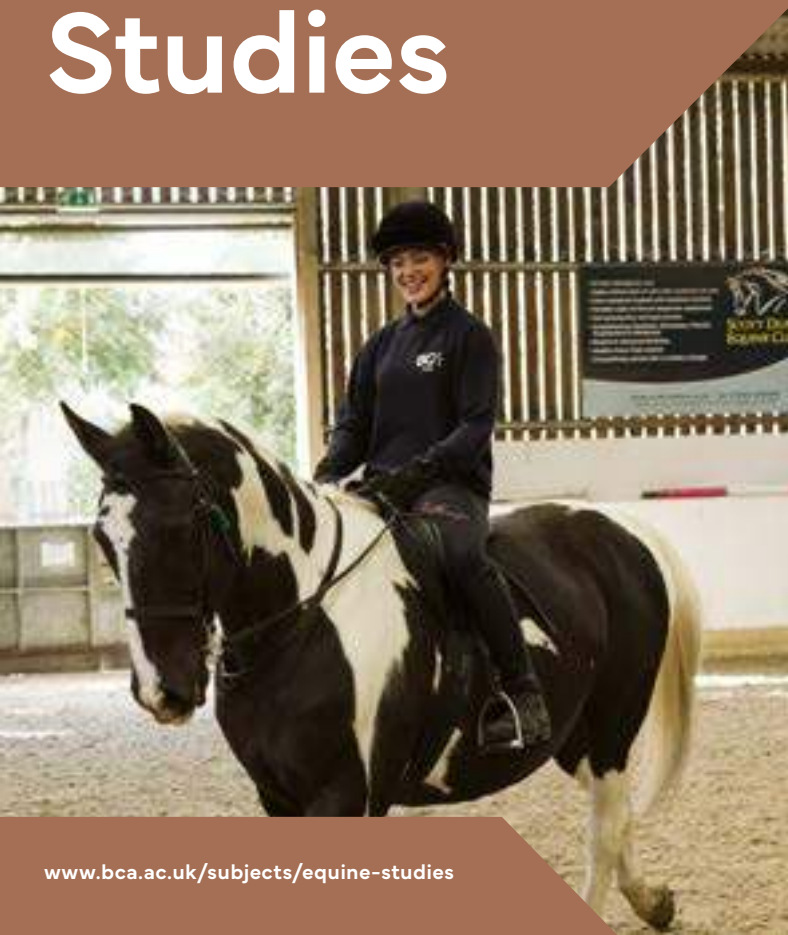
We also offer an Undergraduate course

www.bca.ac.uk/subjects/early-years



Visit our website to find out more about the courses on offer, the skills you will gain on our courses and the employers we work with.

Equine Studies



www.bca.ac.uk/subjects/equine-studies

Level 2 Programme in Equine Studies

(1 year or 2 year study options available)

BHS Stage 2 Care & Knowledge

Level 3 Programme in Equine Management

Please note: We have a 15st weight limit for all riders (inclusive of all riding equipment and saddle). Applicants must be able to pass a riding assessment at interview. The minimum requirement is to walk, trot and canter competently in a balanced position on a well-schooled horse. All students will need to be physically able and willing to take part in all aspects of practical horse care and stable management whatever the weather.

Start Your Career

Competition Groom

Provides care and support to horses competing in equestrian events.

Events Management

Organising and overseeing various equestrian competitions, shows and events.

Equine Nutritionist

Focuses on designing and implementing dietary plans to optimise the health, performance and well-being of horses.

Equine Therapist

Using horses as a therapeutic tool to help individuals improve their well-being.

Riding Instructor

Teaches individuals how to ride and care for horses. They typically work at equestrian facilities.



Visit our website to find out more about the courses on offer, the skills you will gain on our courses and the employers we work with.



Foundation Studies

Suitable for students who may have a learning difficulty or require extra support, working from Entry Level 1 to Level 1



www.bca.ac.uk/subjects/foundation-studies

Level E1 Programme Introduction to Life, Independence & Social Skills

This **1–2 year course** requires students to be working at Milestone 8 upwards or towards Entry Level 1 in English and maths.

Students must be able to work towards accessing all areas of the campus as independently as possible.

For our Entry 1A course students need to be at the higher end of standard 2 and working toward standard 3.

Level E2 Programme – Pathway Towards Independence, Learning & Employability

This **1 year course** requires students to be working at Entry 1 or above in English and maths.

Students should be able to access the campus independently (depending on individual needs).

Level E3 Programme – Towards Independence, Work & Learning

This **1 year course** requires students to have a desire to progress towards learning and employment opportunities and be working at Entry 2 or above in English and maths.

Students should be able to access the campus independently.

Level 1 Programme Progression for Learning

This **1 year course** requires students to be working at Entry 3 or above in English and maths. Students should be able to access the campus independently.



Visit our website to find out more about the courses on offer, the skills you will gain on our courses and the employers we work with.

Level 1 Progression for Work

This **1 year course** requires students to have a desire to work and the ability to access work placements with minimal support. To access this course the student will need to be working at Entry 3 or above in English and maths.

Supported Internship

Internal applications only.

This **1 year course** requires students to have an EHCP, want to go into employment, be willing to learn new skills within a working environment and be committed to accessing a workplace, with support if required.

Preparation Towards Employment

Internal applications only.

This **1 year course** requires students to have an EHCP, want to go into employment, be willing to learn new skills within a working environment and be committed to accessing a workplace, with support if required.

Please note: Suitability for all programmes will be assessed on an individual basis, at interview and during the first six weeks of the programme.

Students should be able to take part in activities around College, work experience in the community and also be able to cope with using public transport safely.

We cannot take students with personal care needs i.e. pads, students that need regular use of a quiet room, bean bag or a specialised timetable. We are not able to take students with aggressive behaviours.

Georgina's Experience

"I chose this course to become more independent and learn how to look after myself. I also really enjoy the animal care lessons and this is an area I would like to go into after college."



Health & Social Care



www.bca.ac.uk/subjects/health-social-care

Level 2 Programme in Health & Social Care

(1 year or 2 year study options available)

Level 3 Programme/ T Level in Health & Social Care

Supporting the Adult Nursing Team/
Supporting the Midwifery Team/
Supporting the Therapy Team

Please note: A Disclosure Barring Service check is also required.

Start Your Career

Midwifery

Provides care and assistance to women during pregnancy, childbirth and the postpartum period.

Social Care Worker

Provides support, assistance and care to individuals who may be vulnerable or disadvantaged.

Occupational Therapy

Helps people participate in the activities and occupations that are meaningful and important to them.

Care Management

Coordinating and overseeing the healthcare and support services to individuals with complex health needs.

Armed Forces

The roles are diverse and multifaceted, spanning combat, support, logistics, and diplomacy.

Nursing

Work in a variety of settings, serving diverse populations and addressing a wide range of healthcare needs.



Visit our website to find out more about the courses on offer, the skills you will gain on our courses and the employers we work with.

Horticulture



We also offer
Horticulture
Apprenticeships

Please see page 52

www.bca.ac.uk/subjects/horticulture

Level 2 Programme in Horticulture

(1 year or 2 year study
options available)

Please note: You will be required to attend an interview, where your suitability, commitment and skills will be assessed.

At the interview, we will require evidence of your interest and passion for working with plants and in developing a career working within horticulture.

All students will need to be physically able and be willing to take part in all aspects of practical work.

Start Your Career

Conservationist

Working to protect and preserve natural environments, wildlife and ecosystems for future generations.

Garden Designer

Creating outdoor spaces that are aesthetically pleasing, functional and in harmony with their surroundings.

Estate Manager

Overseeing the operations and maintenance of a large estate or property.

Ecologist

A scientist who studies ecosystems, the interactions between organisms and their environment and the abundance of living organisms.

Greenkeeper

Responsible for the maintenance of recreational areas featuring turfgrass.

Machinery Operator

Operates various types of machinery and equipment in industrial settings.



Visit our website to find out more about the courses on offer, the skills you will gain on our courses and the employers we work with.

Media Production



www.bca.ac.uk/subjects/media-production

Level 2 Programme in Media Production

(1 year or 2 year study options available)

Level 3 Programme in Creative Media Production



Start Your Career

Animator

Creating animated sequences and visual effects for various forms of media.

Camera Operator

Captures video footage for visual productions.

Director

Play a central role in bringing a screenplay to life through visual storytelling.

Runner

Perform various tasks to support the smooth operation of productions.

Researcher

Gathers information and data related to media content, audiences, trends and industry developments.

Screenwriter

Crafts scripts for film, television or other visual media.

Sound Production

Involves working in various capacities to create film, television and other visual media productions.



Visit our website to find out more about the courses on offer, the skills you will gain on our courses and the employers we work with.

Motor Vehicle



Level 1 Programme in Vehicle Maintenance

Level 1 Programme Motor Vehicle Studies (light vehicle)

Level 2 Programme in Motor Vehicle Studies (light vehicle)

Level 2 Programme LV Maintenance and Repair Principles

Level 3 Programme in Vehicle Maintenance and Repair Principles

Start Your Career

Garage Manager

Involves overseeing the operations of an automotive repair or service facility.

Mechanic

Involves diagnosing, repairing and maintaining vehicles, ranging from cars and trucks to motorcycles and heavy equipment.

Diagnostic Technician

Identifies and diagnoses problems with vehicles using advanced diagnostic tools and techniques.

Automotive Technician

Responsible for diagnosing, repairing and maintaining vehicles.

MOT Tester

Responsible for conducting MOT (Ministry of Transport) tests on vehicles to ensure they meet safety standards mandated by law.

Parts Supplier

Supplies automotive components to customers.



Outdoor Education



www.bca.ac.uk/subjects/outdoor-education

Level 2 Programme in Outdoor Education

(1 year or 2 year study
options available)

Level 3 Programme in Outdoor Education



Start Your Career

Adventure Sports Coach

Provides instruction, guidance and leadership in various outdoor adventure activities and sports.

Activity Instructor

A professional who leads, facilitates and supervises various recreational and outdoor activities for individuals or groups.

Ski Technician

Responsible for maintaining, repairing and tuning ski equipment to ensure optimal performance on the slopes.

Youth Worker

Involves working with young people to support their personal, social and educational development.

Adventure Tourism

Involves organising, leading and facilitating outdoor adventure activities and experiences for travelers seeking immersive travel experiences.



Visit our website to find out more about the courses on offer, the skills you will gain on our courses and the employers we work with.

Performing Arts

Level 2 Programme in Performing Arts

(1 year or 2 year study options available)

Level 3 Programme in Performing Arts



Start Your Career

Actor

Bringing characters to life in various forms of entertainment.

Arts Journalism

Involves reporting and analysing forms of artistic expression.

Broadcasting

Produce and deliver content to audiences through various broadcasting platforms.

Composer

Creating compositions for various purposes.

Choreographer

Creating and designing dance routines for performance mediums.

Dancer

Performing various styles of dance in a wide range of settings.

Stage Management

Oversees the logistical and technical aspects of theatrical productions to ensure performances run smoothly and efficiently.



Production Arts



www.bca.ac.uk/subjects/production-arts

Level 2 Programme in Production Arts

(1 year or 2 year study options available)

Level 3 Programme in Production Arts



Start Your Career

Costume & Wardrobe

Involves designing, creating and managing costumes for productions.

Special Effects

Creating visual or mechanical illusions to enhance the storytelling and visual impact of media projects.

Set Dresser

Working in the art department of media productions to design and decorate sets according to the creative vision of the production team.

Film/TV Production

Coordinating the various aspects of creating a film or television show, from development through to distribution.

Props Makers

Designing, creating and maintaining props used in film, theatre and other media productions.

Director

Leading the creative process of bringing a script to life in all forms of media.



Visit our website to find out more about the courses on offer, the skills you will gain on our courses and the employers we work with.

Protective Services



www.bca.ac.uk/subjects/protective-services

Level 2 Programme in Protective Services

(1 year or 2 year study
options available)

Level 3 Programme in Protective Services

Please note: Students must be able to demonstrate enthusiasm for the public services and the development of their own leadership, teamwork, fitness levels and communication skills and successfully complete an academic interview.

Start Your Career

Armed Services

Serving in the military to protect and defend a nation's interests, both domestically and internationally.

Emergency Services

Working in roles dedicated to public safety, emergency response and crisis management.

Police Officer

Involves protecting the public, maintaining law and order, preventing crime and conducting investigations.

HM Prison Service

Working within the UK's correctional system to manage, rehabilitate and care for inmates.

UK Border Force

Involves working at the frontline of national security to control and protect the UK's borders.

Firefighter

Has a wide range of responsibilities centred on protecting life, property and the environment.



Visit our website to find out more about the courses on offer, the skills you will gain on our courses and the employers we work with.

Sports Studies



www.bca.ac.uk/subjects/sports-studies

Level 2 Programme in Sport

(1 year or 2 year study options available)

Level 2 Programme in Sports Activity Leadership

Level 3 Programme in Sport Exercise Sciences

Level 3 Programme in Gym Instructing & Personal Training

Please note: Minimum age of 17 at the start of the course.

Level 3 Programme in Sports Coaching & Development

Start Your Career

Personal Trainer

Helping clients achieve their fitness goals through customised programs, nutritional guidance and lifestyle coaching.

PE Teacher

Educating students about the importance of physical activity and overall health.

Sports Coach

Training and guiding athletes to improve their skills, performance and overall success in their chosen sport.

Sports Psychologist

Applying psychological principles to help athletes improve their performance in sports.

Sports Therapist

Providing specialised healthcare services to athletes to prevent and rehabilitate sports-related injuries.

Nutritionist

Offering expert advice and guidance on nutrition and dietary habits to promote health and well-being.



Visit our website to find out more about the courses on offer, the skills you will gain on our courses and the employers we work with.



Sports Academies

We offer Sports Academies in **football** (men's and women's), **golf** (men's and women's) and **netball**. All programmes involve regular coaching, strength and conditioning programmes, nutrition plans and medical support as well as individual player development programmes to nurture and develop player's individual sports talents.



Visit our website to find out more about the courses on offer, the skills you will gain on our courses and the employers we work with.

Apprenticeships

Gain real work experience, develop your professional skills and get the training you need to secure a successful future in employment.

What is an Apprenticeship?

An apprenticeship is a job with training to industry standards. An apprentice is a paid employee who is training on the job and involved in an educational programme.

The apprentice gains the skills, knowledge and behaviours that they need to forge their career. This programme supports businesses to train the future workforce. An apprentice could be someone new to the industry or could be an existing member of staff.

As an Apprentice You Will

- Work alongside experienced staff
- Earn a wage and get holiday pay
- Gain job-specific skills
- Get time for study related to your role

You are required to stay in education, employment or training until you turn 18 but this can include being an apprentice. Apprenticeships have a functional skills requirement in English and maths but learners who already have obtained the level required will be exempt from undertaking them. An apprenticeship is a real job where you will be employed full-time for the duration of your qualification. Apprenticeships also include an end-point assessment. It's an assessment at the end of your apprenticeship to make sure you're fully competent in your specific occupation.



Our Apprenticeships

Level 2 Land-based Service Engineer

Level 2 Arboriculture

Level 2 Sports Turf Operative

Level 2 Landscape Operative

Level 2 Horticulture Operative

Level 2 Golf Greenkeeper

Level 3 Advanced Sports Turf Operative

Level 3 Horticulture Supervisor

Apprenticeship standards correct at the time of going to print.



Learn more & view current vacancies at www.windsor-forest.ac.uk/apprenticeships



Open Events

Open Days

Saturday 5th October 2024
Saturday 16th November 2024
Saturday 1st March 2025
All running from 10am–2pm

Open Evening

Wednesday 7th May 2025
5pm–7:30pm



Register Now



Get in Touch

01628 824444
www.bca.ac.uk
enquiries@bca.ac.uk

BCA, Hall Place,
Burchetts Green,
Maidenhead, Berkshire,
SL6 6QR



Visit our website to find out about the skills you will gain on our courses and the employers we work with.

